

MG MOTOR UK LIMITED,
LOWHILL LANE,
LONGBRIDGE,
BIRMINGHAM B31 2BQ

T: 0845 303 6464

FACEBOOK.COM / MGMOTOR

TWITTER.COM / MGMOTOR



MG.CO.UK

IT'S TIME TO FALL IN LOVE AGAIN



Vers 1/01/07/2011

Important Notice: MG Motor UK Limited is constantly seeking ways to improve the specification, design and production of its vehicles and alterations take place continually. Whilst every effort is made to produce up to date literature, this UK market brochure should not be regarded as an infallible guide to current specifications, nor does it constitute an offer for the sale of any particular vehicle. In line with our policy of continual product improvement, MG Motor UK Limited reserves the right to make changes at any time, without notice and without any obligation to update this brochure. The colours and finishes reproduced in this brochure are subject to the limitations of the printing process and may vary from the actual colour and paint finish of our vehicles. Any references in this brochure to speed or performance should not be taken as an encouragement to drive either dangerously or at speeds in excess of the national speed limit. Non-UK specification models shown. The Bluetooth® word mark and logos are owned by the Bluetooth® SIG, Inc. and use of such marks by MG is under licence. Fuel consumption and emissions data not available at time of going to print.

MG6 *Magnette*





ITS TIME TO FALL IN LOVE AGAIN.

Cherished by their makers, loved by their drivers;
MG cars have been capturing hearts for over 85 years.
With its bold looks, great value price tag and sporting spirit,
the new MG6 Magnette is no exception.



MEET THE MG6 MAGNETTE.

The MG6 Magnette is an all-new model giving a fond nod to MG's rich culture and heritage.

The Magnette name has famously been linked with saloon cars throughout MG's history. It was first used on the K Type in the 1930s and was later associated with the MG ZA and MG ZB in the 1950s and 60s.

Today's MG6 Magnette represents a new chapter in MG's colourful narrative. This is a car that's designed and engineered in Britain by a team under the management of Tony Williams-Kenny. It is then manufactured in world-class factories and then put through final assembly in the UK. The result is a spacious, contemporary saloon that marries state-of-the-art technology with MG's continuing commitment to fun, quality and value.

Get ready to fall in love again. Not just once. But every time you take hold of the wheel.



THE ALL NEW BRITISH SPORTS SALOON.

The MG6 Magnette offers all the luxury you'd expect from a contemporary sports saloon: sunroof, front McPherson strut suspension, sports alloy wheels, class-leading chassis, plus Satellite Navigation as standard on the SE and TSE trim levels.

However, there's one element you might not expect from this stylish model: a great value price tag. Staying true to an 85 year-old ethos, MG has once again produced a high quality car that's fun to drive and offers great value for money.

It's never been easier to make a statement without overspending.

MG SPORTS CAR DYNAMICS.

At the heart of the MG6 Magnette you'll find a true MG chassis, designed by a British team with decades of sports car experience. The result? Class leading handling combined with superb ride quality and refinement for all passengers.

As well as its turbocharged 160ps TCiTECH engine, McPherson strut suspension and ultra-compact multi-link rear suspension, the MG6 Magnette has steering that inspires confidence in even the most demanding of conditions.



TRUE SPORTING PEDIGREE.

Since its origins in 1924, MG has always had strong links with motorsport. From the early 1930s, dedicated racing cars were being made and sold to enthusiasts.

In 1939, the MG claimed an incredible land speed record being the first 1100cc car to reach 200mph. This was followed after the war with 500cc and 750cc records in the late 1940s. In addition to entering the record books, a team of MGAs took part in the infamous 1955 Le Mans 24 Hour race, where the best car finished in a credible 12th place.

Several decades later, in 2001, MG relaunched its motorsport campaigns once again at Le Mans, as well as the British Touring Car Championships. To this day, MG boasts the largest amateur racing clubs in the world.

We are proud that this unique motorsport heritage still remains very much alive in the MG6 Magnette.



The ZA Magnette, 1953-56

DRIVING TECHNOLOGY.

Like its predecessors, the MG6 Magnette is designed for a smooth and stylish driving experience.

Alongside the iconic octagonal logo that sits proudly on the grille, you'll find auto headlamps, rear LED lights, and indicators built into the mirrors to give the car a unique blend of both poise and practicality.

When it comes to technology, the MG6 Magnette won't fail the impress. This is a car that offers rain-sensing wipers, power fold mirrors that automatically open as you drive away, an ABS system that wipes the brake discs in wet conditions, as well as front and rear parking sensors on the SE and TSE trim levels.



MG6 *Magnette*

LUXURY LIES WITHIN.

Step into the MG6 Magnette and you'll experience premium uncluttered style and a relaxing sense of space.

With the iconic octagonal badge gracing the steering wheel and modern technology at your fingertips, the interior styling of the MG6 Magnette is a perfect marriage of sporting heritage and modern day luxury.



Fabric trim (S and SE)



Leather trim (TSE only)

THREE TRIM LEVELS.

The MG6 Magnette is available in three trim levels: the MG6 S, the MG6 SE, and the MG6 TSE.

Magnette S

Electronic control air conditioning
17 inch twist sports alloy wheels
6 way adjustable driver sports seat

Magnette SE

Satellite Navigation
Rear parking aid for smoother parking
Cruise control for a more relaxed ride

Magnette TSE

18 inch straight alloy wheels
Reverse parking aid with rear view camera to make parking quick and simple
Luxurious leather sports seats
Automatic dual zone climate control to help you keep your cool, wherever you choose to go



A TRUE SENSE OF SPACE.

Entertaining clients, beginning a new working day, or leaving the office for the open road, the MG6 Magnette offers all the excitement of a sports car combined with space and comfort you need for a relaxing ride.

The interior cabin allows the Magnette to stand out from the crowd. It has rear seat space to rival large executive saloons, a generous boot capable of swallowing even the largest of golf bags, plus a curved roof for maximum head and shoulder room.



WIND IN YOUR HAIR.

When you take the MG6 Magnette TSE for a drive, you can add to the already spacious feel by pressing open the sunroof and letting the British countryside in.

IT CAN ONLY BE THE MG6 MAGNETTE.

The MG6 Magnette is one of a kind. No other saloon offers the same style, space, sporting dynamics or high specifications as standard.

In keeping with our unique sporting heritage, the exemplary suspension dynamics and handling ability have been designed in the UK by British engineers, specifically for British roads.

When you add the class-leading space, superior passenger legroom, iconic octagonal logo and a high specification as standard, you've got all the qualities of a new-generation MG.



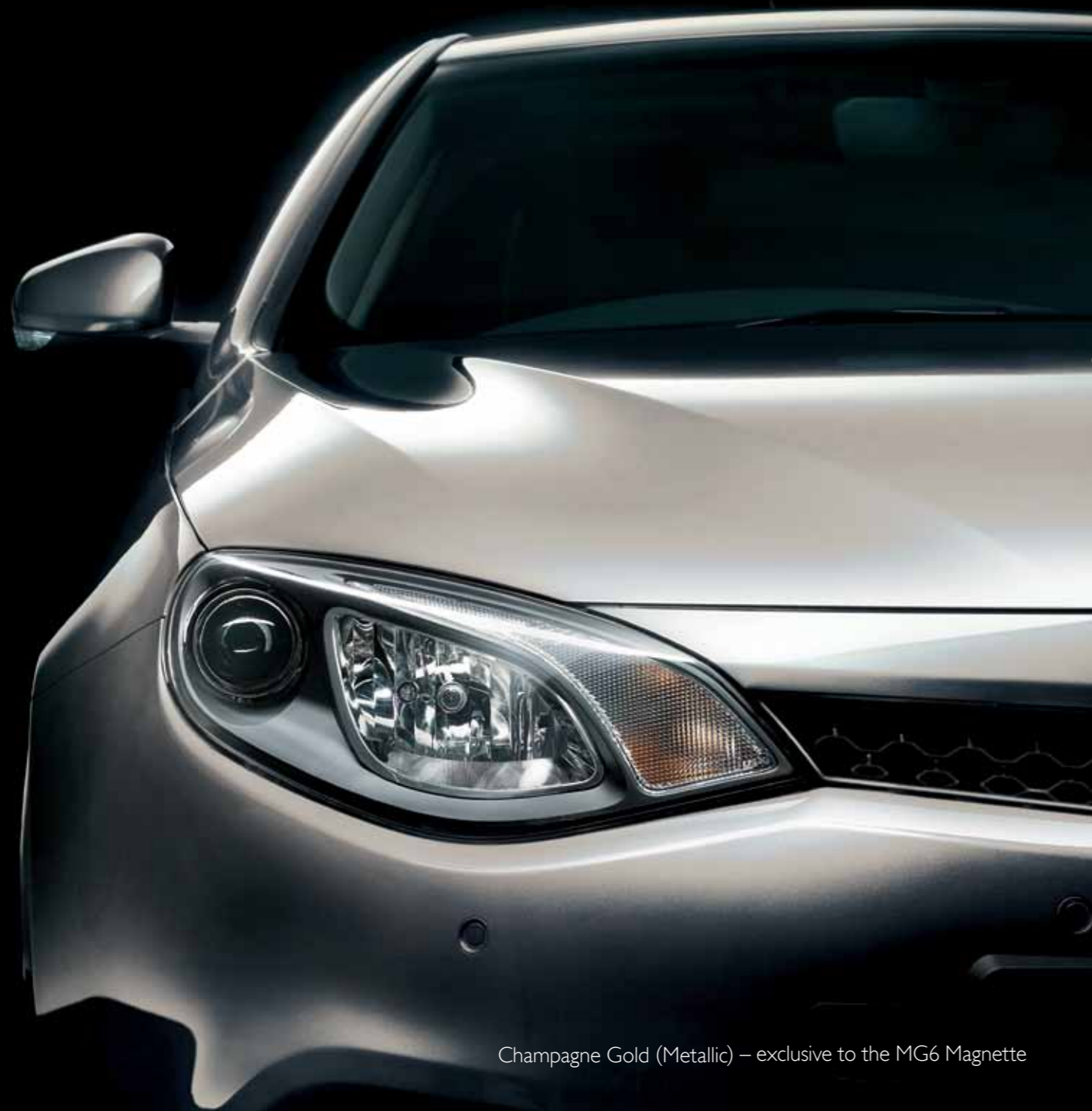
INTERIOR TECHNOLOGY.

The new MG6 Magnette uses the latest technology and engineering to provide you with excellent electronic functionality and an unforgettable driving experience.

The Hill Hold System uses sensors to hold the brake until the clutch reaches biting point, allowing smoother hill starts. While the one-press start button sends the dials into action with a keyless system, helping you get out on the road sooner.

In addition to these innovative features, you'll find power fold mirrors with auto fold out, a reversing camera on the TSE, plus a built-in satellite navigation system on the SE and TSE, complete with Traffic Master, which warns of any issues on the road ahead.

When it comes to control, the MG6 Magnette puts 16 programmable courtesy features at your fingertips, along with a plug-in USB that enables you to personalise the display for your exact needs.



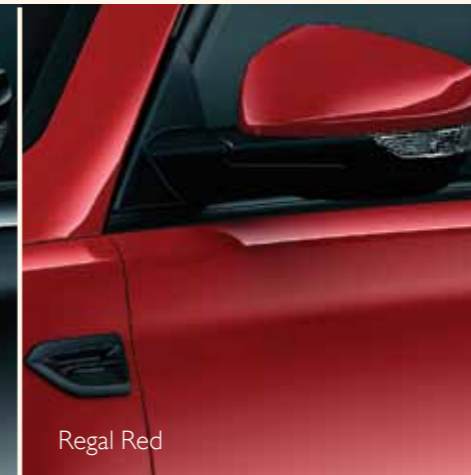
Champagne Gold (Metallic) – exclusive to the MG6 Magnette

MAKE IT YOURS.

Choose from two interior trims and seven stylish colours to make the MG6 Magnette your own.



Pitch Black



Regal Red



Union Blue (Metallic)



Granite Grey (Metallic)



Platinum Silver (Metallic)



Arctic White



COMPREHENSIVE EUROPEAN ROADSIDE ASSISTANCE.

The MG6 comes with a comprehensive European roadside assistance package, which lasts for three years, regardless of vehicle mileage.



WARRANTY.

The MG6 Magnette is supplied with a comprehensive manufacturer's warranty.

The duration is three years or 60,000 miles (whichever is sooner).

Very high mileage drivers can enjoy the peace of mind of unlimited mileage cover during the first twelve months of ownership.

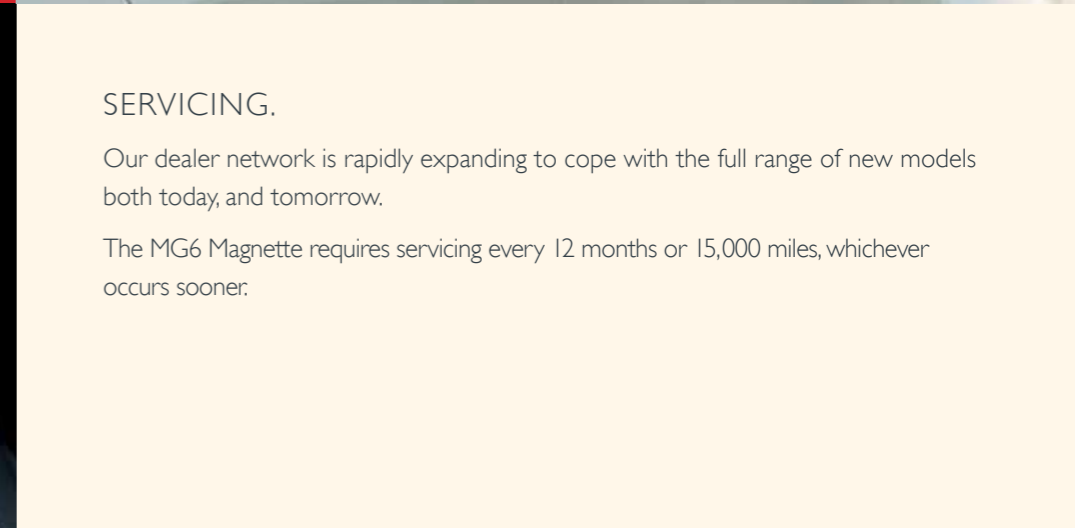
The stylish looks of the MG6 Magnette are protected by a cosmetic warranty that runs concurrent with the manufacturer's policy and anti-corrosion protection lasting six years, regardless of mileage.



SERVICING.

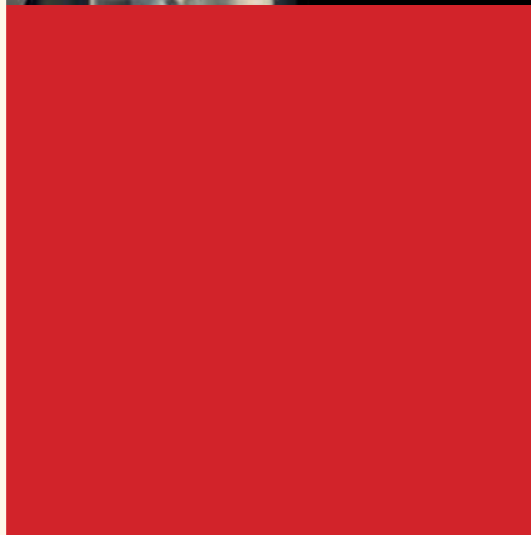
Our dealer network is rapidly expanding to cope with the full range of new models both today, and tomorrow.

The MG6 Magnette requires servicing every 12 months or 15,000 miles, whichever occurs sooner.



INSURANCE.

MG offers competitive insurance policies through our specially selected business partners. Policies can cater for either new or classic MG care.



SPECIFICATIONS.

MG6 MAGNETTE FEATURES

PERFORMANCE

0-60mph: 8.4 seconds
Top speed: 120 mph (limited)
Power: 158bhp at 5500rpm
Max torque: 215Nm
Compression ratio: 9.2:1

EXTERIOR DIMENSIONS

Length: 4651mm
Width: 2008mm (incl. mirrors)
Height: 1472mm
Wheelbase: 2705mm
Kerb weight: S 1485kg / SE 1490kg / TSE 1495kg
Gross weight: 2040 kg
Front track: 1558mm
Rear track: 1555mm
Turning circle: 11.4m

INTERIOR DIMENSIONS

Legroom front max: 1040mm
Legroom rear max: 983mm
H-point (front to rear) couple distance: 835mm
Headroom front: 975mm
Headroom rear: 937mm
Shoulder room front: 1406mm
Shoulder room rear: 1397mm
Elbow room front: 1443mm
Elbow room rear: 1464mm

FUEL TANK USEABLE CAPACITY

62 litres
13.6 gallons

ENGINE SPECIFICATION

1.8 turbo 160ps TCI Tech four cylinder petrol engine
5-speed manual transmission
Air injection
Emission compliant
New EU5 engine management system
MPG (L/100km): Urban: 26.1 (10.8), Extra Urban: 45.2 (6.2), Combined: 35.6 (7.9).
CO2 mass emission (combined) 184 g/km

SUSPENSION AND STEERING

Front McPherson strut suspension
Multi-link rear suspension
Electro-Hydraulic power assisted steering

BRAKING SYSTEM

Anti-lock Braking System (ABS) with Electronic Brake Force Distribution (EBD)
Hill Hold braking system
Ventilated front and rear disc brakes
Electronic brake pad wear sensor and warning



SAFETY AND SECURITY

Driver and passenger airbags
Side airbags
Passenger airbag disable switch/warning light
Side intrusion beams, front and rear doors
ISO-fix child restraint mountings for rear seats (two positions)
Seatbelt reminder
Remote control door locking
Perimetric alarm and immobiliser system
Rear Inertia reel 3-point belts in all positions
Front seat belts with warning lamp on fascia and audio warning
Alarm – Battery backed up sounder (BBUS)

HEATING AND ELECTRICS

One touch engine start
Electronic control air-conditioning
Twin halogen headlamps
Headlamp auto time-out
Front fog lamps
Side direction indicator repeaters (incl. exterior mirror)
Parking light facility
Lights-on warning chime
Heated rear screen - timed operation
Glove box lamp
Driver & front passenger electric windows with one touch up & down facility
Rear electric windows

BODY AND EXTERIOR TRIM FEATURES

Halogen headlights
LED rear lamp cluster
Body-coloured mirrors with inbuilt repeaters
Front bumper assembly body colour, plus black lower
Rear body colour moulded bumper, plus black lower
Body colour door handle finish
17" twist alloy wheels
MG badged wheel centre finisher
Metal effect fascia finisher
Stainless steel exhaust finishing

INTERIOR AND IN-CAR ENTERTAINMENT

Four spoke design steering wheel
Manual gearknob
60/40 folding rear seat with arm rest
Glove box with latch
Ambient interior lighting
In-car entertainment featuring radio, RDS, CD, MP3, USB, Aux-in capability
Air conditioned front arm rest storage
Rear arm rest with cup holders

MG6 MAGNETTE SE ADDITIONAL FEATURES

Rear parking aid
Cruise control
iTMS tyre monitoring
Front parking sensors
Leather steering wheel
Midline Navigation system with radio, RDS, CD, MP3, USB, Aux-in capability, satellite navigation and full colour display
Multifunction steering wheel control

MG6 MAGNETTE TSE ADDITIONAL FEATURES

Reverse parking aid with rear view camera
Leather sports seats
Driver and passenger electric seat adjustment
One touch electric rear windows
Heated front seating
Automatic dual zone climate control
Auto light control system
Highline navigation system with radio, RDS, CD, MP3, USB, Aux-in capability, Bluetooth, satellite navigation and full colour display
18" straight alloy wheels
Electronic rain sensing wipers
Sunroof